



ANT / PRODUCT CATALOG

2021



INTO MUSIC





©2017 AEB Industriale srl. Data, text and pictorial material may not be reproduced in any manner without prior written permission of AEB Industriale srl. © All rights reserved. The information contained in this catalog has been carefully drawn up and checked, however no responsibilities will be assumed for any inexactitude. Technical data and appearance of products are subject to change without prior notice. Images are for demonstration purposes only. Products may change due to technological developments and compliance to regulations. Bluetooth® is a registered trademark under the property of Bluetooth SIG, Inc.

Printed in Italy - January 2020



**HERE
YOUR MUSIC
EXPERIENCE BEGINS**



iROLLER

GREENHEAD
PROFESSIONAL ACTIVE SPEAKERS

ANTMIX

REDFIRE

MBS

RADIOMICS

BHS

ASM

B-TWIG

MIM

BBM

BBA²⁴⁰

IT

ANT produce sistemi audio caratterizzati da prestazioni sonore di qualità e interfacce user-friendly che permettono di vivere al massimo l'esperienza musicale. Le serie ANT rispondono a diverse esigenze di ascolto con sistemi attivi a colonna, speaker, subwoofer, altoparlanti portatili, mixer, microfoni e in-ear monitor. Ogni prodotto ANT è concepito per servire il talento di tutti, perchè ANT è subito musica.

EN

ANT creates audio systems combining an impressive sound performance to smooth and simple interfaces that let users fully enjoy their musical experience. ANT product lines provide simple solutions for any kind of audio application and for every kind of performance. All-in-one column PA, active full-range speakers and subwoofers, portable PA, mixing consoles, wireless microphones and in-ear monitor systems. Each ANT product aims to make the most of any talent. Because ANT is music right away.

DE

ANT Audio kombiniert eindrucksvolle Sound-Performance mit praxisgerechten Features und bietet dem Anwender immer beeindruckende akustische Erlebnisse! ANT Audio Produkte sind immer die ideale Lösung für eine Vielzahl an Anwendungen, vom kompakten Zeilen-Lautsprecher-System über aktive Fullrange-Lautsprecher und Subwoofer, hochportablen PA-Systemen bis hin zu Funk-Sendeanlagen und In-Ear-Monitor Systemen. Jedes ANT Produkt ist speziell dafür entwickelt, alle Talente ohne Kompromisse ins Rampenlicht zu stellen.

ES

ANT crea sistemas de audio que combinan desde un impresionante desempeño sonoro hasta una atractiva interfase de usuario, permitiendo a todo tipo de usuario obtener el máximo de su experiencia musical. Las líneas de productos ANT proveen soluciones sencillas para todo tipo de aplicaciones de audio y para cualquier requerimiento. La columna de PA todo-en-uno, parlantes activos y sub-graves, PA portátil, consolas de audio, micrófonos inalámbricos y sistemas de monitoreo inalámbricos. Cada producto ANT pretende obtener lo mejor de cada talento. Por esto ANT es música al instante.

FR

ANT propose des systèmes audio caractérisés par des performances sonores de qualité et des interfaces intuitives qui permettent à tout type d'utilisateur de profiter pleinement de son expérience musicale. La série ANT répond aux différents besoins d'écoute grâce à des systèmes de colonnes, des enceintes full range et caissons de graves, de systèmes de sonorisation portables, des mixeurs, des microphones et des in-ear monitors. Chacun des produits ANT est conçu pour être au service des talents de toutes sortes, car ANT, c'est la musique pour tous.



INDEX

B-TWIG	8
GREENHEAD	15
REDFIRE	21
MBS	25
BHS	28
BBM	35
BBA 240	44
ASM	48
iROLLER	54
ANTMIX	58
RADIOMICS	70
MiM	78



**B-TWIG
/ PLUG & PARTY ON**

B-TWIG

ACTIVE COLUMN PA SYSTEM SERIES

Comprised of a top element for medium-high frequencies and an active subwoofer delivering powerful low frequencies, B-TWIG Column PA systems are all you need to deliver a rich, detailed and complete audio performance. No sound engineer required for the set up: B-TWIG is ready in seconds thanks to the slide-locking system allowing to connect sub, stand and top element.



- ALL-IN-ONE SYSTEMS FOR PLAYBACK AND LIVE MUSIC
- UNALTERED VOICE REPRODUCTION & POWERFUL BASS RESPONSE
- SET UP & DISMANTLE YOUR SYSTEM IN SECONDS
- PLUG MICROPHONE, INSTRUMENTS OR PORTABLE DEVICE & PLAY



B-TWIG column PA system is all you need to provide a rich, powerful sound in any kind of application. Ideal solution for Dj sets, live acoustic sets, live singing on a backing track. B-TWIG system is comprised of a top HF element and a powered subwoofer. You can set up the whole PA system in seconds, and no sound engineer is required to connect microphones, instruments or

other devices. Simply the answer to all those solo-tour performers. Load the system on your car, and take your music wherever you want.

Extra power and extra features for the ultimate B-Twig column system [B-TWIG12PRO], able to provide 2800 W as well as providing users with professional yet easy-to-use features:

enabled to connect another B-TWIG 12 Pro system, Bluetooth® or multiple I/O to connect all audio sources in seconds, a 4-channel on board mixer, customizable EQs, digital effects and rotatable column to provide your audience with the best sound performance.



Bluetooth®

B-TWIG 8

1000 W ACTIVE COLUMN PA SYSTEM



Bluetooth®

B-TWIG 8
MOBILE

1000 W ACTIVE COLUMN PA SYSTEM



Bluetooth®

B-TWIG 12 PRO

2800 W ACTIVE COLUMN PA SYSTEM



BLUETOOTH® STREAMING AND SOUND MANAGEMENT AT YOUR FINGERTIPS

Inputs, outputs and controls are placed on the upper side of the sub, allowing a quick set up and facilitating any change or correction during the performance. All B-TWIG systems feature an on-board mixer with a channel dedicated to Bluetooth audio streaming from any portable device.

B-TWIG 8 and B-TWIG 8 Mobile systems feature a 3 channel integrated mixer with 2 combo or line inputs. These channels can also manage high impedance inputs such as an electric bass, acoustic guitar or other instruments. The third channel is dedicated to a Bluetooth® stereo stream, or to a mini-jack aux input. Speaking of Bluetooth®, B-TWIG 8 Mobile takes full advantage of Qualcomm(R) true wireless stereo technology. That means you can cast a stereo signal to 2 systems at the same time, and this is definitely the best feature if you need a bigger PA

for background music: no need for cables, no need for power sockets, you just need 2 B-TWIG 8 Ms and a smartphone to stream your jam in stereo. An IOS app will remotely control the mixer board, so levels, EQs and so on. The same smartphone you are using to stream audio via Bluetooth®, will also be able to control all speaker settings simultaneously. Any time you prefer to manage controls directly on board, there is this high brightness colour LCD on the top of the amp module allowing for complete control of the mix, and speaker settings.



B-TWIG12PRO features 4 INPUT channels: CH 1 INSTR/MIC (6.35mm Jack or XLR-F); CH 2 Line/Mic (6.35mm Jack or XLR-F); CH 3 Line/Tape In (2 Combo XLR-F/6.35 mm jack or RCA L/R socket); CH 4 Aux IN Stereo (3.5mm mini-jack) or Bluetooth® sync to connect any smartphone or tablet easily.





COMPACT & PORTABLE

Once dismatted, the three-piece system (sub+top+column stand) is small-scale and easy to transport in its bag. Needless to say it perfectly fits any car trunk.



POWERFUL RESPONSE

The powered subwoofer and the top work together to deliver a powerful response of the low-frequencies and a natural reproduction of the mid-high frequencies. B-TWIG systems reach remarkable sound pressure levels with a precise directivity and a balanced dynamic response.



SLIDE LOCKING SYSTEM

The elements of the system are easily put together in seconds thanks to the slide locking mechanism.



OUTSTANDING BATTERY PERFORMANCE

B-TWIG 8M stands out from the crowd of battery PA systems thanks to the outstanding duration of its integrated battery. Practically, you can get up to 6.5 hours of playback at full power, which means with Bluetooth® receiver, microphone, display, and remote app controls on. Functioning time will extend up to a whopping 10 hours when the system is pushed only at 80% max output, and it can reach up to 19 hours when used for background music only, around 25% power.



PROFESSIONAL GRADE PERFORMANCES

BTWIG 12PRO adds to the set some features that make it an impressively powerful system (2800 W power and 126 dB max SPL) which can adapt to different set ups and applications.

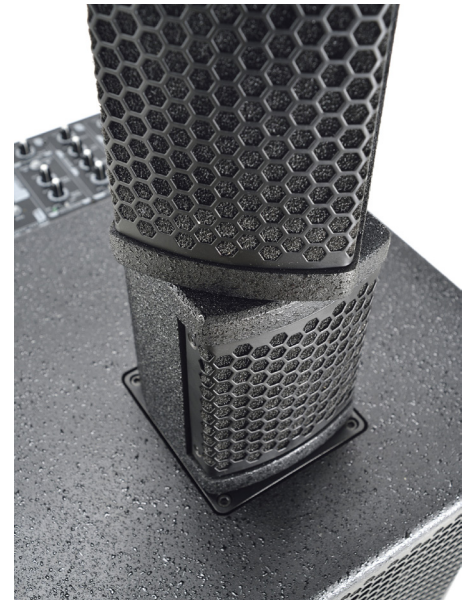
Outputs comprises a SUB XLR-M out to send the signal to another subwoofer and MIX XLR-M Out to address the MAIN MIX to another B-TWIG 12 PRO system in Mono or Stereo Mode.

The DFX unit can be set and activated from the onboard control panel or smoothly activated or bypass through footswitch input.

Controls features separate levels for each channel as well as DFX send/return levels and separate 2-bands EQ (HIGH/LOW) to get the most personal sound for every performance. Moreover, user can easily choose among 4 sound presets: DJ SOUND - PLAYBACK - FF OPENED - LIVE SOUND.

ROTATABLE SPEAKERS

B-Twig 12 PRO is comprised of an active subwoofer (equipped with a 12" woofer and a Class D amplifier) and 2 passive column speakers (each one equipped 6 x 3,5" MHF components). Sub and tops can be easily connected thanks to the fast connection mechanism which also allows to rotate the tops up to 90° left or right ensuring the best coverage in any application.





ACCESSORIES



TOP COVER

Bag for B-TWIG 8 TOP
INCLUDED with the product



TOP COVER

Bag for B-TWIG 8 Mobile TOP
INCLUDED with the product



CV-B12CP

Bag for B-TWIG 12PRO Top



CV-B8S

Bag for B-TWIG 8 and 8 Mobile
Subwoofer

CV-B12SP

Bag for B-TWIG 12PRO Subwoofer

	B-TWIG 8	B-TWIG 8 Mobile	B-TWIG 12
System type	Active column system	Active column system	Active column system
Subwoofer (8S/8S mobile/12S PRO)	1 x 8" Custom ferrite speaker - 1.5" VC	1 x 8" Custom ferrite speaker - 1.5" VC	Vented enclosure - 1 x 12" Ferrite - 2.5" VC - custom speaker
Array speaker (8CS/8CS mobile/12CS PRO)	6 x 2.75" Custom neodymium speakers - 0.75" VC	6 x 2.75" Custom neodymium speakers - 0.75" VC	12 x 3.5" - 1" VC - custom speakers
Average dispersion	Horizontal 120°	Horizontal 120°	120°
Frequency response	50Hz - 20kHz	50Hz - 20kHz	45Hz - 20kHz
Max SPL	120 dB	120 dB	126 dB
Peak Power	1000 W	1000 W	2800 W
Crossover	24dB/Oct @ 200Hz	24dB/Oct @ 250Hz	24dB/Oct @ 200Hz
I/O connectors	CH 1, CH2: Combo XLR-F + jack 6,35mm (1/4") CH3: 2x RCA (L+R), 1x AUX jack 3,5mm MIX OUT: 1x XLR-M	CH 1, CH2: Combo XLR-F + jack 6,35mm (1/4") CH3: 2x RCA (L+R), 1x AUX jack 3,5mm MIX OUT: 1x XLR-M	CH1 & CH2: 2 x XLR-F + 2x 6,35mm (1/4") jack CH 3 LINE IN: 2x combo L/R TAPE IN: RCA L/R AUX IN: 1x 3.5mm mini-jack SUB OUT/MIX OUT: 2x XLR-M DFX FOOTSWITCH: 1x 6,35mm (1/4") jack
Controls	Channel levels, input signal selectors, High and Low EQ, Bluetooth® Pair button & Led	Channel levels, input signal selectors, High and Low EQ, Bluetooth® Pair button	Channel levels, input signal selectors, High and Low EQ, Bluetooth® Pair button & Led, preset on-board, Digital fx
Housing	Polypropylene (Sub) - ABS (Top)	Polypropylene	Plywood (Sub) - MDF (Top)
Dimensions Subwoofer (W x H x D)	304 x 385 x 443 mm	304 x 385 x 443 mm	370 x 583 x 500mm
Weight Subwoofer	10,5 kg	12,3 kg	20,2Kg
Dimensions Top (W x H x D)	92 x 800 x 90.5 mm	92 x 800 x 90.5 mm	105 x 680 x 107mm
Weight Top	4,1 kg	4,1 kg	5,1Kg



GREENHEAD / LIVE YOUR MUSIC



ACTIVE SPEAKER & SUBWOOFER SERIES

Greenhead series makes the most of your live music performance. On tour or in your own rehearsal room, each one of GH systems delivers a professional sound performance. Create your complete GREENHEAD PA system choosing among 3 models of full-range active speakers and 2 different subs.



- CREATE A COMPLETE PA SYSTEM FOR YOUR LIVE MUSIC
- PROFESSIONAL AUDIO PERFORMANCE WITH GREAT SPL
- USER FRIENDLY CONNECTIONS AND ON-BOARD LEVEL CONTROLS
- STURDY AND HIGHLY RESISTANT WOODEN CABINETS FOR FULL-RANGE SPEAKERS AND SUBS



Greenhead series encompasses 3 active full-range speakers and 2 active subs, allowing you to create your perfect PA, whatever your musical project is about. Choose among high-end wooden full range speakers providing great sound and SPL. Connect the system in seconds and manage it in real time thanks to on-board intuitive controls.



FLEXIBILITY AND EASE OF USE

Greenhead are equipped with 2 combo Inputs XLR (Mic/Line), RCA Left/Right, mini-jack stereo input and direct output. On-board controls let performers control master, line and microphone volume.



ALSO READY FOR STAGE MONITOR USE

All 3 models of Greenhead active speakers can be easily used also as stage monitors: the cabinets feature feet on the side allowing horizontal use. This way, musicians on stage always keep maximum control of their live performance.



GREENHEAD
2-WAY ACTIVE SPEAKER SYSTEM 10

10" 2-WAY ACTIVE SPEAKER



GREENHEAD
2-WAY ACTIVE SPEAKER SYSTEM 12

12" 2-WAY ACTIVE SPEAKER



GREENHEAD
2-WAY ACTIVE SPEAKER SYSTEM 15

15" 2-WAY ACTIVE SPEAKER



POLE MOUNTING

The design of the wooden housing facilitates fullrange + sub configurations on a standpole, thanks to specific holes on the bottom of fullrange speakers and on the top of both subwoofers.



FULL CONTROL OF THE LOW-END

Greenhead active subs feature Left/ Mono and Right Inputs, as well as Left/Right Link and Left/Right Output. Modular connectivity allows to configure simple systems such as 1 full-range speaker + 1 sub, 2 full-range speakers + 2 subs, or bigger system with multiple subwoofers. Both subs of the series are equipped with a HPF filtered outputs for stas connection and phase switch. A knob allows to adjust the system's volume.



GREENHEAD
PROFESSIONAL ACTIVE SUBWOOFER 15S

15" ACTIVE SUBWOOFER



GREENHEAD
PROFESSIONAL ACTIVE SUBWOOFER 18S

18" ACTIVE SUBWOOFER



ACCESSORIES / GREENHEAD SPEAKERS



CV-GH10

Cover for GREENHEAD 10.

CV-GH12

Cover for GREENHEAD 12.

CV-GH15

Cover for GREENHEAD 15.

	GREENHEAD 10	GREENHEAD 12	GREENHEAD 15
System type	2-way vented box	2-way vented box	2-way vented box
LF	10" ferrite custom speaker - 2" V.C	12" ferrite custom speaker - 2" V.C	15" ferrite custom speaker - 2" V.C
HF	1" Compression driver	1" Compression driver	1" Compression driver
Frequency response	58Hz - 20kHz (-10 dB)	50Hz - 20kHz (-10 dB)	50Hz - 20kHz (-10 dB)
Max SPL	122 dB	123 dB	125 dB
Peak power	1000 W	1200 W	1200 W
I/O Connectors	MIC: Combo XLR-F + 6,35mm (1/4") jack LINE IN: XLR-F + 6,35mm jack (1/4") AUX IN: 2 x RCA jack, 3,5mm mini-jack LINE OUT: XLR-M	MIC: Combo XLR-F + 6,35mm (1/4") jack LINE IN: XLR-F + 6,35mm jack (1/4") AUX IN: 2 x RCA jack, 3,5mm mini-jack LINE OUT: XLR-M	MIC: Combo XLR-F + 6,35mm (1/4") jack LINE IN: XLR-F + 6,35mm jack (1/4") AUX IN: 2 x RCA jack, 3,5mm mini-jack LINE OUT: XLR-M
Controls	MIC LEVEL, LINE/AUX LEVEL, MASTER VOLUME, GND switches	MIC LEVEL, LINE/AUX LEVEL, MASTER VOLUME, GND switches	MIC LEVEL, LINE/AUX LEVEL, MASTER VOLUME, GND switches
Housing	15 mm MDF	15 mm MDF	15 mm MDF
Dimensions (WxHxD)	316 x 540 x 295 mm	360 x 574 x 331 mm	423 x 655 x 390 mm
Weight	13.8 Kg	16 Kg	19.1 Kg

ACCESSORIES / GREENHEAD SUBS

CV-GH15S

Cover for GREENHEAD 15S.

CV-GH18S

Cover for GREENHEAD 18S.



	GREENHEAD 15S	GREENHEAD 18S
System type	vented box	vented box
LF	15" Custom Ferrite - 2.5" V.C	18" Custom Ferrite - 2.5" V.C
Frequency response	42Hz -120Hz (-10dB)	42Hz -130Hz (-10dB)
Max SPL	126 dB	129 dB
Peak power	1200 W	1600 W
I/O Connectors	LINE IN LEFT/MONO XLR-F + 6,35mm (1/4") jack LINE IN RIGHT: XLR-F LINK OUT L/R: 2 x XLR-M LINE OUT: 2 x XLR-M	LINE IN LEFT/MONO XLR-F + 6,35mm (1/4") jack LINE IN RIGHT: XLR-F LINK OUT L/R: 2 x XLR-M LINE OUT: 2 x XLR-M
Controls	VOLUME knob GND LIFT, LOW CUT, PHASE switches	VOLUME knob GND LIFT, LOW CUT, PHASE switches
Housing	18 mm Plywood	18 mm Plywood
Dimensions (WxHxD)	580 x 455 x 511 mm	661 x 535 x 560 mm
Weight	25.3 kg	33.2 Kg



**REDFIRE
/ BOOST YOUR
MUSIC FEELING**



ACTIVE FULL RANGE SPEAKER SERIES

REDFIRE full-range speakers are versatile speakers able to adapt to many different uses. Sturdy and light, they are both user friendly PA for any kind of performance and perfect for fixed installation on walls thanks to the flying points on the upper and lower side of the cabinet. Just a brilliant solution for DJs, dancers, fitness professionals, and whoever loves to pump up the volume.

- PLUG & PLAY FULL-RANGE SYSTEMS
- VERSATILE, LIGHTWEIGHT AND PORTABLE DESIGN
- INSTALLATION-READY WITH FLYING POINTS
- UNLIMITED RANGE OF APPLICATIONS BOTH INDOOR AND OUTDOOR





EASE OF USE AND VERSATILITY

REDFIRE combines ease of use and application versatility. Each one of the three models of the series can be also used as a stage monitor both for Dj-sets and small live applications.



ENDURANCE AND LIGHTNESS

The housing is made of sturdy polypropylene which contains the overall weight while delivering sturdyness to the system. Small details of the design eases portability and flying points facilitate permanent installations.



USER FRIENDLY LEVEL CONTROL

Each REDFIRE is equipped with a Class D amplifier module and allows user-friendly level controls. Each system features Mic/Line XLR Inputs featuring two independent levels plus 2-band EQ (Hi/Low), a stereo mini-jack input for smart devices connection and direct output.



REDFIRE₁₀
10" 2-WAY ACTIVE SPEAKER



REDFIRE₁₂
12" 2-WAY ACTIVE SPEAKER



REDFIRE₁₅
15" 2-WAY ACTIVE SPEAKER

ACCESSORIES

CV-RF10

Cover for REDFIRE 10.

CV-RF12

Cover for REDFIRE 12.

CV-RF15

Cover for REDFIRE 15.



	REDFIRE 10	REDFIRE 12	REDFIRE 15
System type	2-way vented box	2-way vented box	2-way vented box
LF	10" custom speaker - 1.5" V.C	12" custom speaker - 2" V.C	15" custom speaker - 2" V.C
HF	1" Compression driver - 1" V.C	1" Compression driver - 1.35" V.C	1" Compression driver - 1.35" V.C
Frequency response	60 Hz - 20 kHz	50Hz - 20kHz	45Hz - 20kHz
Max SPL	120 dB	122 dB	123 dB
Peak power	500 W	800 W	800 W
I/O Connectors	MIC: Combo LINE IN: XLR-F + 6,35mm jack (1/4") AUX IN: 3,5mm mini-jack LINE OUT: XLR-M	MIC: Combo LINE IN: XLR-F + 6,35mm jack (1/4") AUX IN: 3,5mm mini-jack LINE OUT: XLR-M	MIC: Combo LINE IN: XLR-F + 6,35mm jack (1/4") AUX IN: 3,5mm mini-jack LINE OUT: XLR-M
Controls	MIC LEVEL, LINE/AUX LEVEL, LOW EQ, HIGH EQ, MASTER LEVEL	MIC LEVEL, LINE/AUX LEVEL, LOW EQ, HIGH EQ, MASTER LEVEL	MIC LEVEL, LINE/AUX LEVEL, LOW EQ, HIGH EQ, MASTER LEVEL
Suspension system	2 x M8 - under	4 x M10 - top/under	5 x M10 - top/under/rear
Housing	Polypropylene	Polypropylene	Polypropylene
Dimensions (WxHxD)	321 x 505 x 307 mm	385 x 597 x 366 mm	460 x 705 x 440 mm
Weight	12 Kg	17.3 Kg	21.1 Kg



MBS
/ MUSIC ALL AROUND

MBS

ACTIVE DSP PROCESSED SPEAKERS

MBS is the most versatile among ANT's active speaker, thanks to user friendly i/o, smart DSP presets and Bluetooth® connection.

A solid, powerful full range speaker series delivering exactly the sound you need, in any situation.

- BLUETOOTH®
- DSP WITH 4 PRESETS
- POWERFUL AND COMPACT
- 3 INPUT CHANNELS
- PADDED COVER INCLUDED
- INTEGRATED FLYING POINTS
- POLE MOUNT WITH 2 TILT ANGLE OPTIONS





EASE OF USE AND VERSATILITY

The solid enclosure features top and side handles, a mount pole allowing 2 different tilt angles (0° - 75°), flying points to ease fixed installation on brackets and anti-slip rubber feet.



USER FRIENDLY LEVEL CONTROL

MBS features 3 input channels (Mic/line, Line and Bluetooth®) with separate volume control knobs. The Pair button allows you to easily connect any Bluetooth® device. Once the speaker is in action, you can set the most suitable EQ choosing among 4 presets (playback, live sound, sub simulator, stage monitor) while optimizing the audio performance.



MBS 10
10" 2-WAY ACTIVE SPEAKER



MBS 12
12" 2-WAY ACTIVE SPEAKER



MBS 15
15" 2-WAY ACTIVE SPEAKER

ACCESSORIES

COVER

Cover with side pocket for MBS 10.
INCLUDED with the product.

COVER

Cover with side pocket for MBS 12.
INCLUDED with the product.

COVER

Cover with side pocket for MBS 15.
INCLUDED with the product.



	MBS 10	MBS 12	MBS 15
System type	2-way vented box	2-way vented box	2-way vented box
LF	10" custom speaker - 2" V.C	12" custom speaker - 2.5" V.C	15" custom speaker - 2.5" V.C
HF	1" Compression driver - 1" V.C	1" Compression driver - 1.35" V.C	1" Compression driver - 1.35" V.C
Frequency response	70 Hz - 20 kHz	60 Hz - 20 kHz	45 Hz - 20 kHz
Max SPL	125 dB	127 dB	127 dB
Peak power	1000 W	1600 W	1600 W
I/O Connectors	MIC/LINE: Combo LINE IN: XLR-F + 6,35mm jack (1/4") MIC IN: XLR-F LINE OUT: XLR-M	MIC/LINE: Combo LINE IN: XLR-F + 6,35mm jack (1/4") MIC IN: XLR-F LINE OUT: XLR-M	MIC/LINE: Combo LINE IN: XLR-F + 6,35mm jack (1/4") MIC IN: XLR-F LINE OUT: XLR-M
Controls	CH1: LEVEL, LINE/MIC switch, CH2:LEVEL, CH3: LEVEL, Bluetooth® PAIR, MAIN LEVEL, LINK/MIX switch	CH1: LEVEL, LINE/MIC switch, CH2:LEVEL, CH3: LEVEL, Bluetooth® PAIR, MAIN LEVEL, LINK/MIX switch	CH1: LEVEL, LINE/MIC switch, CH2:LEVEL, CH3: LEVEL, Bluetooth® PAIR, MAIN LEVEL, LINK/MIX switch
Suspension system	2 upper, 1 rear	2 upper, 1 rear	2 upper, 1 rear
Housing	HD Polypropylene	HD Polypropylene	HD Polypropylene
Dimensions (WxHxD)	310 x 530 x 299mm	365 x 628 x 354 mm	425 x 728 x 414 mm
Weight	11.3 Kg	15.9 kg	19.1 kg



BHS
/ PURE SOUND.
ANY PLACE, ANY STANDING



ULTRA COMPACT 2.1 SELF-POWERED SYSTEM

Looking for the right solution to a huge range of applications? ANT presents a new family of 2.1 system (active subwoofer+2 full-range tops) encompassing ease of use, rapidity of setup and a dynamic and faithful response for every kind of performance, from home application to AV presentations and small live gigs.

- 2.1 POWERED PA SYSTEM
- 1 ACTIVE SUB + 2 FULL-RANGE SATELLITES
- POWERFUL 3-WAY CLASS D AMPLIFIER
- UP TO 126 DB SPL (FOR BHS 1800)
- DYNAMIC AND FAITHFUL RESPONSE
- ULTRA-COMPACT
- WIDE RANGE OF APPLICATIONS FROM HOME TO LIVE STAGE





The family is comprised of 3 models in order to meet a vast range of requirements from home application to live stage gigs.



2 SpeakON cables to connect satellites to the sub are included in every model.

The bass reflex subwoofer is the heart of the system, equipped with a Class D amplifier delivering power to the sub itself and to the 2 full-range satellites, providing a dynamic and faithful response wherever your performance space is.



BHS 800

ULTRA COMPACT 2.1 800W SYSTEM

BHS 800 8" active band-pass sub +2 full range 2-way speakers (1x5"LF+1x1"HF)



BHS 1200

ULTRA COMPACT 2.1 1200W SYSTEM

BHS 1200 (12" active subwoofer +2 full range 2-way speakers (1x"6.5+1x1"HF)



BHS 1800

ULTRA COMPACT 2.1 1800W SYSTEM

BHS 1800 (15" active subwoofer +2 full range 2-way speakers (1x"8"+1x1"HF)



BHS systems have been designed for an intuitive and quick all-user set up, featuring 2x combo (XLR/6.35mm jack) inputs, 1x 3.5 mm mini-jack AUX INPUT to connect external devices and 2 L/R RCA TAPE Inputs. 2x Speakon OUT allow to connect left and right satellites while 2x XLR LINK Outputs allow to connect another speaker or a mixing console.

Controls allow users to modify main level, sub level, select Mono or Stereo Mode and reverse sub phase.



ACCESSORIES



WHEELS KIT FOR SUB TRANSPORT

Wheels kit for
BHS 1200S
BHS 1800S



CV-BHS800

Transport Kit for BHS800.



CV-BHS1200

Bag Set for BHS1200



CV-BHS1800

Bag Set for BHS1800

	BHS 800	BHS 1200	BHS 1800
System Type	Ultra compact 2.1 Self-powered system	Ultra compact 2.1 Self-powered system	Ultra compact 2.1 Self-powered system
Subwoofer	Band-Pass cabinet 8" custom ferrite woofer 1.5" VC	Bass reflex cabinet 12" custom ferrite woofer 2.5" VC	Bass reflex cabinet 15" custom ferrite woofer 2.5" VC
Satellite	2-way, full range LF: 5" HF: 1" horn loaded tweeter	2-way, full range LF: 6.5" HF: 1" horn loaded tweeter	2-way, full range LF: 8" HF: 1" horn loaded tweeter
Satellite Disperion (H°xV°)	100 x 60	90 x 60	80 x 60
Frequency response (full system)	60Hz-20kHz	50Hz-20kHz	42Hz-20kHz
Max SPL	120 dB	124 dB	126 dB
Peak Power	800 W	1200 W	1800 W
Crossover / slope	24dB/Oct @ 200Hz	24dB/Oct @180Hz	24dB/Oct @ 140Hz
I/O Connectors	2 x COMBO (XLR-F + 2 x jack 6,35mm. 1/4") AUX IN: 1 x mini-jack 3.5mm TAPE IN: RCA L/R LINE OUTPUT: 2 x XLR-M SATELLITE OUT: 2 x SPEAKON	2 x COMBO (XLR-F + 2 x jack 6,35mm. 1/4") AUX IN: 1 x mini-jack 3.5mm TAPE IN: RCA L/R LINE OUTPUT: 2 x XLR-M SATELLITE OUT: 2 x SPEAKON	2 x COMBO (XLR-F + 2 x jack 6,35mm. 1/4") AUX IN: 1 x mini-jack 3.5mm TAPE IN: RCA L/R LINE OUTPUT: 2 x XLR-M SATELLITE OUT: 2 x SPEAKON
Controls	Main Level, Sub level, 0°-180° phase reverse, STEREO/MONO switch, GND and ON/OFF switches	Main Level, Sub level, 0°-180° phase reverse, STEREO/MONO switch, GND and ON/OFF switches	Main Level, Sub level, 0°-180° phase reverse, STEREO/MONO switch, GND and ON/OFF switches
Cooling	Fan	Fan	Fan
Subwoofer dimensions (W x H x D)	370 x 380 x 416 mm	441 x 465 x 544 mm	482 x 520 x 588 mm
Subwoofer weight	16 Kg	23 Kg	29 Kg
Satellite dimensions (W x H x D)	180 x 290 x 193.5 mm	200 x 345 x 215 mm	240 x 435 x 250 mm
Satellite weight	3.6 Kg	5 Kg	6.7 Kg



**BBM
/ A SIMPLY UNIQUE
ENVIRONMENT**

BBM

COMPACT INSTALLATION SPEAKERS

BBM are the most compact 2-way speaker in ANT family. A pretty easy solution for small portable applications, BBM also acts as unobtrusive installation; the cabinets can be easily fixed on wall or stands thanks to custom accessories.

- 2-WAY COMPACT SPEAKERS
- READY FOR INSTALLATIONS
- READY FOR WALL OR CEILING MOUNTING

- ACTIVE VERSION (BLACK ONLY)
- PASSIVE VERSION (BLACK OR WHITE)





The speakers are equipped with 2 INPUT channels with separate level management: CH 1 mic/line (selectable with switch button) with jack connection and CH 2 with minijack connection. The OUT channel (jack) allows link to another BBM speaker.

BBM's great versatility is completed by a clear, undistorted sound performance even at high sound pressure levels (up to 103 dB): the CLIP led indicates when the signal gets distorted. In that case you only need to turn down levels of active IN channels.



BBM3

3" 2-WAY BI-AMPED SPEAKER



BBM5

5" 2-WAY BI-AMPED SPEAKER



BBM8

8" 2-WAY BI-AMPED SPEAKER



CREATED FOR INSTALLATIONS

Thanks to its accessories (not included) BBM series can be installed with ease and versatility.

The cabinets can be easily fixed on wall thanks to custom accessories BBM WBU (U bracket) or on stands with BBM-SA (L bracket). Alternatively, the kit BBM-358 Y allows to fix the cabinet on walls or ceiling and modify orientation and tilt.

SUIT ANY NEEDS

BBM P (Passive)

An immediate solution for small fixed applications in combination with the BBA 240 amplifier, the BBM P systems meet the needs of users seeking a compact audio system for installations with constant impedance or voltage (70-100V). BBM P can easily cover small and medium sized environments, both indoor and outdoor thanks to the IP55 protection grade.

BBM (active)

All models of BBM features 2 INPUT CHANNELS (mic/line and line), Independent level management, 1 OUT channel as well as an anti-distortion CLIP led.





BBM3 WP

3" 2-WAY PASSIVE SPEAKER



BBM5 WP

5" 2-WAY PASSIVE SPEAKER



BBM8 WP

8" 2-WAY PASSIVE SPEAKER



BBM3BP

3" 2-WAY PASSIVE SPEAKER



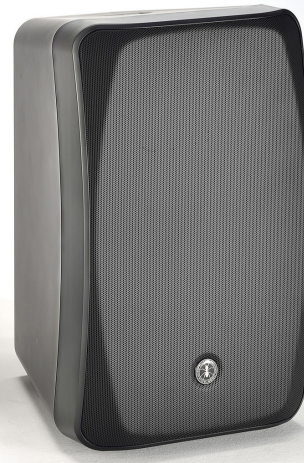
BBM5BP

5" 2-WAY PASSIVE SPEAKER



BBM8BP

8" 2-WAY PASSIVE SPEAKER



ACCESSORIES



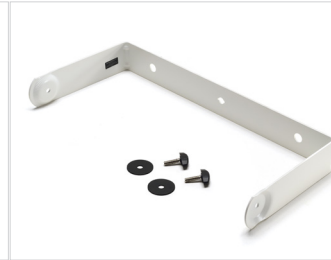
BBM-WB3U

Wall mount U-bracket for BBM3



BBM-358Y

Wall mount Y-bracket for all
BBM Series speakers



BBM-WB3UW

Wall mount U-bracket for
BBM3WP



BBM-358YW

Wall mount Y-bracket for all
BBM W Series speakers

BBM-WB5U

Wall mount U-bracket for BBM5

BBM-WB5UW

Wall mount U-bracket for
BBM5WP

BBM-WB8U

Wall mount U-bracket for BBM8

BBM-WB8UW

Wall mount U-bracket for
BBM8WP



BBM-SA30

D25mm Stand adaptor for
BBM3

BBM-SA50

D35mm Stand adaptor for
BBM5

BBM-SA80

D35mm Stand adaptor for
BBM8



	BBM 3	BBM 5	BBM 8
System type	Vented enclosure, 2-way	Vented enclosure, 2-way	Vented enclosure, 2-way
LF	3.5" custom speaker - 1" V.C.	5" custom speaker - 1" V.C.	8" custom speaker - 1" V.C.
HF	0.8" neodymium dome tweeter	1" neodymium dome tweeter	1" neodymium dome tweeter
Amplification Type (LF+HF)	Class D + Class A/B	Class D + Class A/B	Class D + Class A/B
Peak Power (LF+HF)	80W	100W	120W
Frequency response (-10dB)	140Hz-20kHz	100Hz-20kHz	55Hz-20kHz
SPL - MAX	103 dB	109 dB	112 dB
I/O Connectors	CH1 MIC/LINE: 6,35 mm (1/4") jack CH2 IN: 3,5 mm . mini-jack LINE OUT: 6,35 mm (1/4") jack	CH1 MIC IN: XLR-F CH1 LINE IN: 6,35 mm (1/4") jack CH2 IN: 3,5 mm. mini-jack and 2 RCA LINE OUT: 6,35 mm (1/4") jack	CH1 MIC IN: XLR-F CH1 LINE IN: 6,35 mm (1/4") jack CH2 IN: 3,5 mm. mini-jack and 2 RCA LINE OUT: 6,35 mm (1/4") jack
Controls	CH1 LEVEL, LINE/MIC switch, CH2 LEVEL	CH1 LEVEL, LINE/MIC switch, CH2 LEVEL.	CH1 LEVEL, LINE/MIC switch, CH2 LEVEL.
Suspension system	2 M6 - top/under for U bracket mouth 4 M5 - rear for Y and SA brackets	2 M6 - top/under for U bracket mouth 4 M5 - rear for Y and SA brackets	2 M6 - top/under for U bracket mouth 4 M5 - rear for Y and SA brackets
Housing	Injection-Molded ABS cabinet Perforated Steel Grille	Injection-Molded ABS cabinet Perforated Steel Grille	Injection-Molded ABS cabinet Perforated Steel Grille
Dimensions (WxHxD)	134.3 x 220.4 x 136.4 mm	170.5 x 272 x 171.8 mm	250 x 400 x 251 mm
Weight	2.1 Kg	3.7 Kg	6.3 kg

	BBM 3BP / WP	BBM 5BP / WP	BBM 8BP / WP
System type	Vented enclosure, 2-way	Vented enclosure, 2-way	Vented enclosure, 2-way
LF	3.5" custom speaker - 1" V.C.	5" custom speaker - 1" V.C.	8" custom speaker - 1" V.C.
HF	0.8" neodymium dome driver	1" neodymium dome driver	1" neodymium dome driver
Frequency response (-10dB)	140Hz-20kHz	100Hz-20kHz	55Hz-20kHz
Nominal Power	20W RMS/8Ω – 10W/20W/40W/80W @ 70V and 100V	40W RMS/8Ω –10W/20W/40W/80W @ 70V and 100V	80W RMS/8Ω –10W/20W/40W/80W @ 70V and 100V
Input cable	Headed cable 2x1 White (+) Black (-)	Headed cable 2x1 White (+) Black (-)	Headed cable 2x1 White (+) Black (-)
Suspension system	2 M6 - top/under for U bracket mouth 4 M5 - rear for Y and SA brackets	2 M6 - top/under for U bracket mouth 4 M5 - rear for Y and SA brackets	2 M6 - top/under for U bracket mouth 4 M5 - rear for Y and SA brackets
Housing	Injection-Molded ABS cabinet Perforated Steel Grille	Injection-Molded ABS cabinet Perforated Steel Grille	Injection-Molded ABS cabinet Perforated Steel Grille
Dimensions (WxHxD)	134.3 x 220.4 x 136.4 mm	170.5 x 272 x 171.8 mm	250 x 400 x 251 mm
Weight	2.1 Kg	3 Kg	6 kg



BBA / MULTI-ZONE SOUND CONTROL



MULTI-ZONE P.A AMPLIFIER

The ANT amplifier designed for the BBM P series is the ideal solution for sound reinforcement in multi-zone venues. With its essential and contemporary design, it combines professional features and usability in an optimal way.

➤ 3U SIZE - 5 INPUT CHANNELS

➤ BLUETOOTH®

➤ OUT FOR UP TO 4 ZONES WITH PRE-LISTENING

➤ INDEPENDENT CONTROLS FOR EACH ZONE/
OUT CH





The BBA 240 is equipped with 5 selectable inputs: 4 IN mic/line and 1 for synch with Bluetooth devices. Each INPUT has gain and mute controls. BBA also has OUTs for 4 zones with the possibility of headphones or monitor pre-listening for each single zone and independent controls for each zone. The output for headphones or monitors is also equipped with independent controls.



	BBA 240
Input connectors	CH1-4 - Combo (XLR+6,35mm. jack) CH5 - Pin jack Tel - RJ11
Input sensitivity	CH1-4 - Mic/Phantom: -50dBV; Line: -10dBV balanced CH5 - unbalanced -10dBV Tel - balanced -10dBV
Signal-to-noise ratio	Mic >65dB Line >75dB Tel >65dB
Indicators	5 MUTE LED for inputs 1 Bluetooth® PAIR LED 4 zone level indicators 1 monitor zone level indicator 1 ON LED
Frequency response (-3dB)	60Hz-17KHz
EQ controls - HIGH/LOW	+/-10 @ 10KHz; +/-10 @ 100Hz
Output connectors	Line, Monitor & Speakers - Phoenix Phones - 6,35mm. jack
POWER AMP. OUTPUT Power	120W RMS x 4CH @ 4Ω
POWER AMP. OUTPUT connections	Constant impedance – 4Ω/8Ω Constant voltage – 25V/70V/100V
Power supply	Selectable 110-120V~ or 220-240V~
Power consumption	1200W
Dimensions (WxHxD)	483 x 133 x 395 mm
Weight	7Kg



**ASM
/ ON STAGE WITH
YOUR EMOTIONS**

ASM SERIES

ACTIVE COAXIAL STAGE MONITORS

ASM is an active 2-way coaxial stage monitor available in 3 models with 10", 12" or 15" woofers and 1" Compression Driver. Specially designed for an immediate use, ASM adapts to the needs of musicians of every kind.

- 35MM POLE MOUNT FOR VERTICAL USE
- COAXIAL ACOUSTIC DESIGN
- EQ PRESETS
- LOW PROFILE DESIGN, ROCK-SOLID CONSTRUCTION

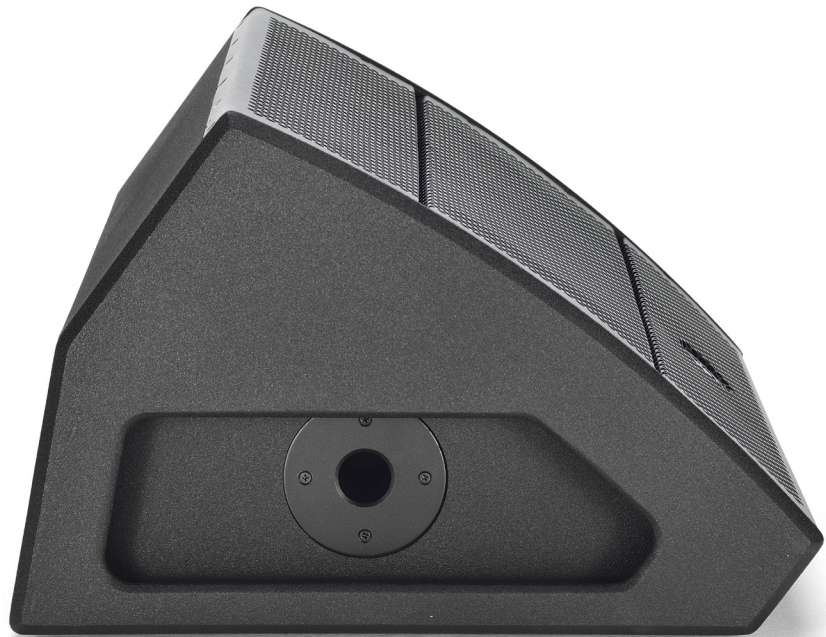




Thanks to the ultra-efficient acoustic design and intuitive on-board controls, ASM always guarantees a professional performance.

ASM stage monitor features an essential and contemporary design. The cabinet is equipped with side recessed handles, a 35 mm pole mount for a vertical installation on a tripod and is entirely covered with a highly resistant anti-scratch coating.

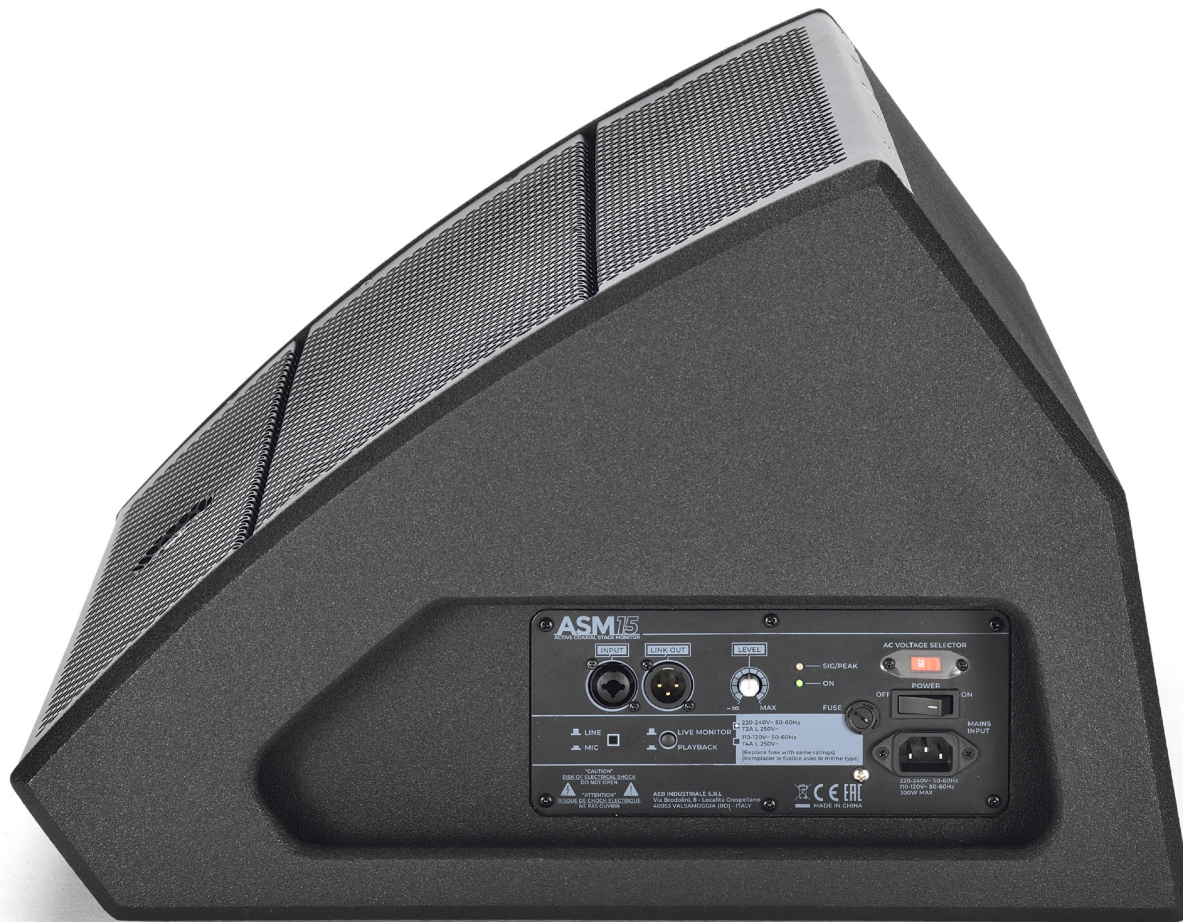
Padded covers are available as accessories.



ASM10
ACTIVE COAXIAL STAGE MONITOR

ASM12
ACTIVE COAXIAL STAGE MONITOR

ASM15
ACTIVE COAXIAL STAGE MONITOR



The side panel is equipped with a COMBO MIC/LINE IN (with a mode selection switch), LINK OUT, output level control and EQ presets (live or playback) enabling users to set the best signal management for every situation.



ACCESSORIES



CV-SM10

Padded Cover for ASM10.



CV-SM12

Padded Cover for ASM12.



CV-SM15

Padded Cover for ASM15.

	ASM 10	ASM 12	ASM 15
System type	2-way vented box	2-way vented box	2-way vented box
LF	Custom 10" Woofer, 2" VC	Custom 12" Woofer, 2.5" VC	Custom 15" Woofer, 3" VC
HF	1" compression driver, 1" VC	1" compression driver, 1.35" VC	1" compression driver, 1.35" VC
Amplification Type (LF+HF)	Class D + Class A/B	Class D + Class A/B	Class D + Class A/B
Peak Power (LF+HF)	400W	600W	600W
Frequency response (-10dB)	70Hz-20kHz	65Hz-20kHz	55Hz-20kHz
SPL - MAX	122dB	124dB	126dB
DSP	24-Bit/48kHz AD/DA 2 Preset EQ	24-Bit/48kHz AD/DA 2 Preset EQ	24-Bit/48kHz AD/DA 2 Preset EQ
I/O Connectors	MIC/LINE COMBO (XLR-F + 2 x jack 6.35mm. 1/4") LINK output: XLR-M	MIC/LINE COMBO (XLR-F + 2 x jack 6.35mm. 1/4") LINK output: XLR-M	MIC/LINE COMBO (XLR-F + 2 x jack 6.35mm. 1/4") LINK output: XLR-M
Controls	LEVEL, LINE/MIC switch ON-PEAK/SIGN LEDs PRESET button	LEVEL, LINE/MIC switch ON-PEAK/SIGN LEDs PRESET button	LEVEL, LINE/MIC switch ON-PEAK/SIGN LEDs PRESET button
Cabinet	2 recessed handles Pole mount Ø 35mm. hole	2 recessed handles Pole mount Ø 35mm. hole	2 recessed handles Pole mount Ø 35mm. hole
Housing	Injection-Molded ABS cabinet Perforated Steel Grille	Injection-Molded ABS cabinet Perforated Steel Grille	Injection-Molded ABS cabinet Perforated Steel Grille
Dimensions (WxHxD)	380 x 333 x 480 mm	450 x 338 x 510 mm	495 x 405 x 610 mm
Weight	12 Kg	19 Kg	20.5 Kg



**IROLLER
/ ROCK'EM
ALL EVERYWHERE**

iROLLER

BATTERY-POWERED PORTABLE PA

iROLLER: simply everything you need to take your show wherever you wish. Available in 2 models (iRoller 10 equipped with 1x 10" custom woofer and 1x 3" HF component and iRoller 8 equipped with 1x8" custom woofer and a 1x 3" HF, both driven by a class D amp), these portable PAs feature a long lasting battery, inputs for microphone and instruments and Bluetooth connection for remote control. The perfect partners for street performers, buskers, and all kind of travelling acts.



- PERFORM ANYTIME & ANYWHERE WITH LONG-LASTING BATTERY AND REMOTE CONTROL
- CONNECT ANY PORTABLE DEVICE VIA BLUETOOTH®
- INTEGRATED MP3 PLAYER WITH USB PORT/SD CARD SLOT
- ON BOARD 3-CHANNEL MIXER WITH INDEPENDENT LEVEL CONTROLS



ON-BOARD MIXER, MP3 AND REMOTE CONTROL

iROLLER 10 is equipped with an integrated 3-channel mixer with microphone, Line, RCA, and mini-Jack Inputs. Plus, the system features an on-board MP3 reader, USB port, SD Slot and Bluetooth® connection. Moreover, iRoller 10 features a remote control device for real time PA management.

iRoller 8's integrated mixer features CH1 with mic/line combo IN, CH 2 has 2 mono jack IN for your stereo sources. Channel 3 is dedicated to media reproduction via Bluetooth®, USB or aux. You can add reverb to the mix channels, and a contour knob on the master, allows for optimization of the output reproduction.



iROLLER 8
BATTERY-POWERED
PORTABLE PA



iROLLER 10
BATTERY-POWERED
PORTABLE PA



LONG LASTING BATTERY

PAs are equipped with a long lasting battery. This way, you can use the system literally everywhere: in the street, at the parc, and anywhere an artist needs to perform, just as long as he wants. You can control the battery level thanks to the leds on the side of the system, where you can also find mains input to recharge the PA.

MOVE FREELY

The trolley design of this portable PA features integrated wheels, a telescopic handle and a further handle on the top. A light and compact complete PA that can be transported anywhere by anyone. iRoller 8 also adds a retractable feet for a 35° inclination for monitoring use, plus a housing for your smartphone on top.

	iROLLER8	iROLLER10
System type	2-way vented box	2-way vented box
LF	8" custom woofer - 1.5" V.C.	10" custom woofer - 1.5" V.C.
HF	3" - 0.5" V.C.	3" - 0.5" V.C.
Frequency response	65Hz - 18kHz	65Hz - 18kHz
Max SPL	113 dB	117 dB
Peak power	20W RMS (d.c. power) – 50W RMS (a.c. power)	100 W
Controls	CH 1 Level, CH2 Level, Reverb, Master, Contour	Mic 1 Level, Mic 2 Level, CD/Tape IN Level, Low, High, Echo, Master Volume, tasto AUX/MP3
Indicators	Power, 5 battery status LEDs	Power, 4 battery status LEDs
Mic inputs	2 x (1 alternative to instrument input CH2)	2 x (1 alternative to instrument input CH2)
Mic input connections	XLR, 6.35mm. (1/4") jack	XLR, 6.35mm. (1/4") jack
Instrument input	-	1 x (alternative to CH2 microphone input)
Instrument input connection	-	6.35 mm (1/4") jack
Line input	2x (1 alternative to CH2 microphone input)	1 x (selectable between RCA e 3.5mm mini-jack)
Line input connections	CH2 - 2 x 6.35mm (1/4 ") jacks, CH3 - 3.5mm jack	2 (1 x RCA, 1 x 3.5mm mini-jack)
Battery	VRLA type rechargeable 12V / 5Ah	12 V / 5 Ah
Housing	High density polypropylene	15 mm MDF
Dimensions (WxHxD)	381 x 525 x 210 mm	413 x 530 x 327 mm
Weight	9.8 Kg	17 Kg
Other features	2x transport wheels, telescopic handle, upper carrying handle, retractable support for 35° system inclination	36 mm pole mount, transport wheels, telescopic handle, carrying handle, IR remote control for MP3 player



ANTMIX / A MATTER OF SOUND

ANTMIX

COMPACT AUDIO MIXING CONSOLE SERIES

ANTMIX series helps you to get the most out of your PA system, adapting the sound to the environment and to your personal taste. A compact and light mixing console, available in 3 different models, combines with a smart and intuitive design, allowing users to create smoothly the most suitable sound. Dj sets, live gigs, conferences with one or more speakers, ANTMIX series is the ideal solution to deliver a detailed, personal sound.

- MAKE THE MOST OF ANY LIVE AUDIO PERFORMANCE
- 24-BIT DIGITAL SOUND PROCESSED EFFECTS FOR THE MOST CREATIVE MIX
- ON-BOARD MIC PREAMP FOR LOW-NOISE AND MORE DYNAMIC RANGE





SMOOTH SOLUTIONS WITH PRO-DETAILS

ANTMIX Mixing Console Series allows to manage sound in many different situations: a public speaking, a conference, but also more complex applications such as live music. The smart design of the console helps all kind of user to get the most of any audio performance. All the models of this series represent a smooth solution featuring pro-details such as an advanced internal DSP with different effects and variations, the built-in compressor for main microphone inputs of 8FX and 12FX, 60 mm faders as well as a series of I/O to fulfill a wide range of applications.



EXCELLENT PERFORMANCES

Specifically designed for an immediate and user friendly use, these mixers satisfy the needs of those who want an audio mixer providing excellent performances, wide versatility of connections and controls.



ADAPTER FOR MICROPHONE STAND

MS-68 adapter, available as an accessory of ANTMIX consoles, allows you to fix the mixer on any microphone stand. This way, you can manage the sound from anywhere you need to, also on stage.



ANTMIX 6FX

6-CHANNEL MIXING CONSOLE



ANTMIX 8FX

8-CHANNEL MIXING CONSOLE



ANTMIX 12FX

12-CHANNEL MIXING CONSOLE

ACCESSORIES / ANTMIX6FX-8FX-12FX



MS-68
Microphone stand adapter for
ANTMIX6, ANTMIX8



RW-8
Rack mounting kit for
ANTMIX8



CV-AM6
Transport bag for ANTMIX6

RW-12
Rack mounting kit for
ANTMIX12

CV-AM8
Transport bag for ANTMIX8

CV-AM12
Transport bag for ANTMIX12

	ANTMIX 6FX	ANTMIX 8FX	ANTMIX 12FX
MONO mic/line inputs	2	2 with compressor	4 with compressor
Mic mono/stereo line inputs	-	2	2
Stereo line input	2	1	2
Dimensions (W x H x D)	196 x 68 x 243 mm	255 x 68 x 342 mm	340 x 100 x 416 mm
Weight	1,18 Kg	1,98 Kg	3,53 Kg

COMMON SPECIFICATION

Compressor (only for channels featuring this control)	Gain: 0 ---> 9 dB Threshold: 20 dB ---> 5 dB
Hum & noise	< -80dB (A weighted, full bandwidth, 1 channel and MAIN @ 0dB, other channels @ minimum)
Crosstalk	< -80dB (A weighted, full bandwidth, 1 channel and MAIN @ 0dB, other channels @ minimum)



MICROPHONE INPUT

Connector	Balanced XLR
Impedance	1.8 k Ω
Frequency response	20~20kHz +/-1dB
Distortion (THD + N)	<0,03% @ +0dB, 22~22 kHz, A weighted
Gain	0~55dB
Max input	+15dB (balanced)
Low-cut	75Hz 12dB/oct.
Signal-to-noise ratio	<-100 dBr A weighted
Phantom powering	+48V

EQUALIZATION

Mono & mono/stereo channels	+/-15 dB @12 kHz +/-15 dB @2.5 kHz +/-15 dB @80 Hz
Stereo channels	+/-15 dB @12 kHz +/-15 dB @80 Hz

MICROPHONE INPUT

Connector	2 x unbalanced RCA
Impedance	10 k Ω
Frequency response	20~20kHz +/-1dB
Distortion (THD + N)	<0,03% @ +0dB, 22~22 kHz, A weighted
Gain	OFF~+15dB

LINE INPUT

Connector Balanced	6,35mm (1/4") - unbalanced RCA
Impedance	10 k Ω
Frequency response	20~20kHz +/-1dB
Distortion (THD + N)	<0,03% @ +0dB, 22~22 kHz, A weighted
Gain	+15dB~-35dB
Signal-to-noise ratio	<-100 dBr weighted A

2-TRACK IN

Mono & mono/stereo channels	+/-15 dB @12 kHz +/-15 dB @2.5 kHz +/-15 dB @80 Hz
Stereo channels	+/-15 dB @12 kHz +/-15 dB @80 Hz

STEREO RETURNS

Connector	2 x balanced 6,35mm (1/4")
Impedance	10 k Ω
Frequency response	20~20kHz +/-1dB
Distortion (THD + N)	<0,03% @ +0dB, 22~22 kHz, A weighted
Gain	OFF~+15dB

DSP

A/D - D/A converters	24 bit
Number of effects	16 for 6FX – 100 for 8Fx and 12FX
Controls	Presets rotary selector - 16 position (6FX) or 100 position (8FX & 12FX) DFX MUTE footswitch / DFX MUTE switch / DFX button (only 8FX & 12FX)

OUTPUTS

MAIN MIX connectors	2 x TRS 6,35mm (1/4") connector (XLR in 12FX)
MAIN MIX max output level	+22 dBu XLR balanced (+16 dBu unbalanced)
MAIN MIX output impedance	120 Ω
GR1-2 in connectors (12FX only)	2 x TRS balanced 6,35mm (1/4")
GR1-2 max output level (12FX only)	+22 dBu XLR balanced (+16 dBu unbalanced)
GR1-2 output impedance (12FX only)	120 Ω
Headphones connector	Unbalanced TRS 6,35mm (1/4")
Headphones impedance	30 Ω
Control room connectors	2 x balanced TRS 6,35mm (1/4")
Control room impedance	120 Ω
2-TK connectors	2 x unbalanced RCA
2-TK impedance	1 k Ω



ANTMIX 16FX and ANTMIX24FX allow to manage sound in many different applications, even the more complex live music set ups. The smart design of the consoles helps all kind of user to get the most of any audio performance. It represents a smooth solution featuring pro-details such as an advanced internal DSP with different effects and variations, the built-in compressor for main microphone inputs, 60 mm faders as well as a series of I/O to fulfill a wide range of applications.



ANTMIX 16FX USB
16-CHANNEL MIXING CONSOLE WITH DIGITAL EFFECTS & USB



ANTMIX 24FX USB
24-CHANNEL MIXING CONSOLE WITH DIGITAL EFFECTS & USB



Both new ANTMIX models provide an integrated USB interface allowing direct connection with a computer, in order to send an audio track to the console or record the performance on a stereo track.

Moreover, optional cards MPX 1624 and BTX 1624 allow respectively cable or Bluetooth® connection to any mp3 reader device.





ACCESSORIES / ANTMIX16FXUSB - 24FXUSB



BTX 1624 BLUETOOTH® PLAYER

Bluetooth® Card for
ANTMIX16 and ANTMIX24



MPX 1624 USB PLAYER

USB Card for
ANTMIX16 and ANTMIX24

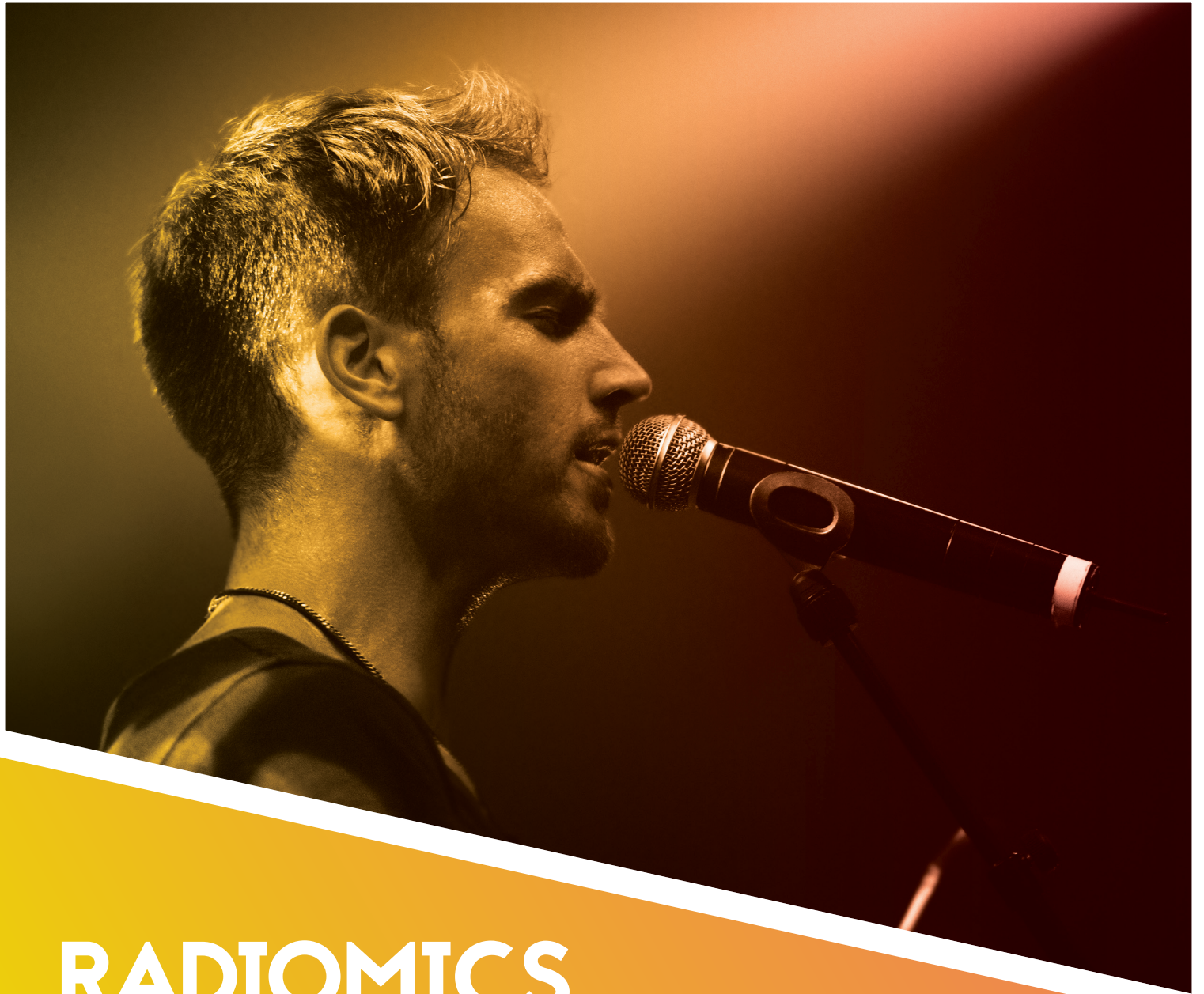
	ANTMIX 16FXUSB		ANTMIX 24FXUSB	
MONO mic/line inputs	8, 6 with compressor		16, 8 with compressor	
Mic mono/stereo line inputs	2		2	
Stereo line input	2		2	
Dimensions (W x H x D)	515 x 460 x 85 mm		735 x 460 x 85 mm	
Weight	7 Kg		9,7 Kg	
2-TRACK IN	ANTMIX 16-24FXUSB	EQ		ANTMIX 16-24FXUSB
Connector	2 x RCA unbalanced	Mono & mono/stereo channels		+/-15 dB @12 kHz +/-15 dB @ 100Hz~8kHz +/-15 dB @ 80Hz
Impedance	10 kΩ			Stereo channels
Frequency response	20~20kHz +/-1dB			
Distortion (THD + N)	<0,03% @ +0dB, 22~22 kHz, A weighted			
Gain	OFF~+15dB			

MIC INPUT	ANTMIX 16-24FXUSB
Connector	XLR-F balanced
Impedance	1.8 k Ω
Frequency response	20~20kHz +/-1dB
Distortion (THD + N)	<0,03% @ +0dB, 22~22 kHz, A weighted
Gain	0~55dB
Max input	+15dB (balanced)
Low-cut	75Hz 12dB/ott.
Signal-to-noise ratio	<-100 dBr A weighted
Phantom powering	+48V
LINE INPUT	
Connector	6,35mm (1/4") balanced - RCA unbalanced
Impedance	10 k Ω or higher
Frequency response	20~20kHz +/-1dB
Distortion (THD + N)	<0,03% @ +0dB, 22~22 kHz, A weighted
Gain	+15dB~-35dB
Signal-to-noise ratio	<-100 dBr A weighted
FEATURES	
Compressor	Gain: 0 ---> 9 dB Threshold: 20 dB ---> 5 dB
Hum & noise	< -80dB A weighted, full band-width 1 channel and MAIN @ 0dB, other channels @ idle
Crosstalk	< -80dB A weighted, full band-width 1 channel and MAIN @ 0dB, other channels @ idle



STEREO RETURN	ANTMIX 16-24FXUSB	DSP	ANTMIX 16-24FXUSB
Connector	4 x 6,35mm(1/4") balanced	A/D D/A converters	24 bit
Impedance	10 k Ω	Number of effects	100
Frequency response	20~20kHz +/-1dB	Controls	Preset rotative encoder- DFX MUTE footswitch pedal DFX MUTE switch 2-digit display
Distortion (THD + N)	<0,03% @ +0dB, 22~22 kHz, A weighted		
Gain	OFF~+15dB		

MAIN MIX SECTION	ANTMIX 16-24FXUSB
MAIN MIX outputs	2 x XLR e 2 x jack 6,35mm (1/4") balanced
MAIN MIX max level	+22 dBu XLR balanced (+16 dBu unbalanced)
MAIN MIX impedance	120 Ω
GR1-2 GR3-4 outputs	jack 6,35mm (1/4") balanced
GR1-2, GR3-4 max levels	+22 dBu 6,35mm (1/4") balanced (+16 dBu unbalanced)
GR1-2 GR3-4 impedance	120 Ω
Prese Headphones 1-2	2 x jack 6,35mm (1/4") stereo unbalanced
Headphones impedances	30 Ω
Control room outputs	2 x jack 6,35mm (1/4") balanced
Control room impedance	120 Ω
2-TRACK OUT outputs	2 x RCA unbalanced
2-TRACK impedance	1 k Ω



RADIOMICS
/ FREE YOUR VOICE

RADIOMICS

WIRELESS MICROPHONE UHF SYSTEMS

Singers, musicians or speakers often need to move freely on stage without any obstacle such as microphone cables. ANT Radiomics series is the solution. Available with handheld transmitter or bodypack with headset. Because freedom of movement also means freedom of expression.



- AVAILABLE WITH HDM HANDHELD TRANSMITTER OR BHS BELTPACK+HEADSET
- DIVERSITY TECHNOLOGY SELECTING THE BEST RADIO SIGNAL
- IR RECEIVER/TRANSMITTER SYNCHING FOR A QUICK AND EASY SET UP
- MULTIFUNCTION LCD DISPLAY ON TRANSMITTER AND RECEIVER FOR SMOOTH SET UP AND SYSTEM CONTROL



UNO G8

192 CHANNEL TRUE-DIVERSITY WIRELESS UHF MICROPHONE SYSTEM



Uno G8 represents the top range of ANT Radiomics series, delivering a professional audio performance with wide dynamic range and a natural sound free from distortion.

Uno G8 receivers adopt True Diversity Technology, i.e. are equipped with two discrete antennas, A and B, which are used to select, at any moment, the best radio signal.

The system operates in UHF 1785 - 1800 MHz band with 192 selectable channels.

Both the handheld microphone and the belt-pack transmitter are equipped with an LCD display allowing a simple frequency selection and receiver-transmitter synchronisation. The display also allow a full control of the system, showing the channel, the group and a number of functions including battery status, mute, and squelch preset for noise suppression control.



BELTPACK VERSION



HANDHELD VERSION

UNO G8 / TECH SPECS

	UNO G8R
Type	True Diversity
Modulation	FM
Frequency range	1785 - 1800MHz
Channels	192 (12 x 16 groups)
Frequency response	50Hz - 16.000Hz (±3dB)
T.H.D.	<0,8%
Audio outputs	Balanced XLR, unbalanced 6,35mm (1/4") jack
Balanced output level	+ 6dBu
Controls	Power, Value up, Value down, ASC, SET
Indicators	Multi-function LCD
Dimensions (W x H x D)	212 x 44 x 166 mm
Weight	910 g

	UNO G8M
Modulation	FM
Frequencies range	1785 - 1800 MHz
Channels	192 (12 x 16 groups)
Type	Dynamic
Polarity	Cardioid
Frequency response	50Hz - 16.000Hz (±3dB)
Output power	10mW
Controls	ON/OFF
Indicators	Multi-function LCD
Power supply	2 AA batteries
Operating time	>10h with alkaline batteries
Length	254 mm (10")
Max diameter	52.5 mm (2.06")

	UNO G8B
Modulation	FM
Frequencies range	1785 - 1800 MHz
Channels	192 (12 x 16 groups)
Input	Mini-XLR
Frequency response	50Hz - 16.000Hz (±3dB)
T.H.D.	<0,8%
Output power	10mW
Controls	Power / Mute, select, Gain (3 levels)
Indicators	Multi-function LCD
Power supply	2 AA batteries
Operating time	>10h with alkaline batteries
Dimensions (W x H x D)	64 x 90 x 23 mm
Weight	85 g (3 oz)



START 16

16 CHANNEL PLL DIVERSITY UHF WIRELESS SYSTEM



START 16 wireless systems operates in FREE 863-865 MHz UHF Band and 823-832 MHz band available in most European countries. This mean the system freely operates in many countries, avoiding any problem due to local regulations. The wireless system work on 16 different channels.



START 16R receivers adopt PLL Diversity technology, with two discrete antennas selecting at any moment the best radio signal. You may choose the operating frequency via buttons or via infrared technology, allowing an automatic transmitter/receiver synch for a quick and smooth set up.

All transmitter also features a built-in Energy saving circuit: up to 10 hour operation (with standard AA LR6 batteries).

BELTPACK VERSION



HANDHELD VERSION

START 16 / TECH SPECS

	START 16R
Type	Diversity
Modulation	FM
Frequency range	823-832MHz (B6) / 863-865MHz (B7)
Frequency response	60Hz - 15.000Hz (±3dB)
Transmission optimisation	Pilot tone
T.H.D	<1%
Audio outputs	Balanced XLR, unbalanced 6,35mm (1/4") jack
Controls	Power, channel up, channel down, ASC, volume Indicators Channel number, antenna A/B, 5 LEDs level
Dimensions (W x H x D)	212 x 44 x 115 mm
Weight	400 g

	START 16M
Modulation	FM
Frequencies range	823-832MHz (B6) / 863-865MHz (B7)
Channels	16
Type	Dynamic
Polarity	Cardioid
Frequency response	60Hz - 15.000Hz (±3dB)
Output power	10mW
Controls	ON/OFF
Indicators	Power and battery status
Power supply	2 AA 1.5 Volts batteries
Operating time	>10h with alkaline batteries
Length	254 mm
Max diameter	52.5 mm
Weight	250 g

	START 16B
Modulation	FM
Frequencies range	823-832MHz (B6) / 863-865MHz (B7)
Channels	16
Input	DC powered Mini-XLR for PH-90
Headset frequency response	60Hz - 15.000Hz (±3dB)
Output power	10mW
Controls	Gain (3 steps), ON / Standby / OFF
Indicators	Power and battery status
Power supply	2 AA 1.5 Volts batteries
Operating time	>10h with alkaline batteries
Dimensions (W x H x D)	64 x 90 x 23 mm
Weight	80 g



START 8

8 CHANNEL PLL DIVERSITY VHF WIRELESS SYSTEM



Start 8 is a wireless microphone which operates in the VHF frequency range. Nowadays, most of wireless devices work on UHF range. Operating in VHF band means avoiding all the interferences due to the presence of many others kind of wireless devices, allowing the system to transmit and receive a "clean" signal.



Available in 2 versions (handheld or beltpack+headset), Start 8 operates on 16 different channels on 3 different bands; F1 174-184MHz / F2 190-200MHz / F3 206-216MHz. Moreover, the receivers adopt PLL Diversity technology, with two discrete antennas selecting at any moment the best radio signal.

The microphone also features a low power consumption: up to 10 hour operation with standard AA batteries.

BELTPACK VERSION



HANDHELD VERSION

START 8 / TECH SPECS

	START 8R
Type	Diversity
Modulation	FM
Frequency range	174-184MHz (F1) / 190-200MHz (F2) / 206-216MHz (F3)
Frequency response	60Hz - 14.000Hz (± 3 dB)
Transmission optimisation	Pilot tone
Audio outputs	Balanced XLR, unbalanced 6,35mm (1/4") jack
Controls	ON/OFF, ASC, Volume
Dimensions (W x H x D)	212 x 44 x 115 mm
Weight	400 g

	START 8M
Modulation	FM
Frequencies range	174-184MHz (F1) / 190-200MHz (F2) / 206-216MHz (F3)
Channels	8 for each band
Type	Dynamic
Polarity	Cardioid
Frequency response	60Hz - 14kHz (± 3 dB)
Output power	10mW
Controls	ON/OFF
Indicators	Power and battery status
Power supply	2 AA (LR6) 1.5 Volts batteries
Operating time	>10h with alkaline batteries
Length	254 mm
Max diameter	52.5 mm
Weight	250 g

	START 8B
Modulation	FM
Frequencies range	174-184MHz (F1) / 190-200MHz (F2) / 206-216MHz (F3)
Channels	8 for each band
Input	3-pin mini-XLR for PH-30 Headset
Headset frequency response	60Hz - 14kHz (± 3 dB)
Output power	10mW
Controls	Adjustable gain in 3 steps MIC / 0dB / -10dB
Indicators	Power and battery status
Power supply	2 AA (LR6) 1.5 Volts batteries
Operating time	>10h with alkaline batteries
Dimensions (W x H x D)	64 x 90 x 23 mm
Weight	80 g



MIM
/ ON THE MOVE

MiM

MY IN EAR MONITORING SYSTEMS

MiM in-ear monitor systems allows you to get a uniform and accurate audio in the whole stage space, avoiding any risk of feedback due to stage monitors. MiM systems allows you to adapt the monitoring to your needs and enjoying the live sound of other musicians with maximum comfort. Both MiM models are also available with standard earplug or Beyerdynamic Fire One earplug, for the most accurate sound reproduction.

- WORK ON DOUBLE FREQUENCY RANGE 823-832MHZ + 863-865MHZ FOR BEST RADIO TRANSMISSION
- 96 UHF CHANNELS AVAILABLE
- DISTORTION FREE AUDIO
- DISPLAY FOR EASY SET UP FULL SYSTEM CONTROL
- PROFESSIONAL BEYERDYNAMIC FIRE ONE EARPLUG AVAILABLE





MiM 20 96 CHANNEL IN EAR MONITORING SYSTEM



MiM's basic in ear monitoring system, comprised of receiver plus a comfortable and reliable earplug. Both systems are also available with Beyerdynamic Fire One earplug, ensuring the most natural audio reproduction and professional performances.

The system is equipped with LCD display on receiver and transmitter facilitating the set up of the system. Both MiM 20 and MiM 30 allows users to select mono or stereo mode in order to adapt audio transmission to their personal habits and professional needs.

The design of MiM receivers allow to mount the system on a rack unit in case of multiple applications.

MiM 30 96 CHANNEL IN EAR MONITORING SYSTEM

MiM 30, top range model of the MiM series, makes the most of the high-quality audio transmission thanks to on-board controls helping users to adapt the sound to their taste and needs. In fact, MiM 30 allows performers to adjust INPUT signal levels, adjust balance of a Stereo signal, set a LIMITER to reduce sudden peaks, and choose among many preset EQ directly from the beltpack receiver.



MIM / TECH SPECS

	MIM 20T	MIM 30T
Modulation	FM stereo	FM stereo
Range of frequencies	823-832MHz + 863-865MHz	823-832MHz + 863-865MHz
Channels available	96 (8 groups with 12 channels each)	96 (8 groups with 12 channels each)
Output power	10mW	10mW
Frequency response	50Hz – 15.000Hz (±3dB)	50Hz – 15.000Hz (±3dB)
Inputs	2 x balanced XLR	2 x balanced COMBO - XLR and 6,35mm (1/4") jack
Front panel controls	Headphones volume, SET and up/down buttons, power button	Headphones volume, input level, SET and up/down buttons, power button
Rear panel controls	2 x AF LEVEL, MONO/STEREO switch	0/-12dB PAD switch
Indicators	Multi-function LCD	Multi-function LCD
Dimensions (W x H x D)	212 x 44 x 96 mm	212 x 44 x 96 mm
Weight	560 g	560 g
	MIM 20R	MIM 30R
Modulation	FM stereo	FM stereo
Range of frequencies	823-832MHz + 863-865MHz	823-832MHz + 863-865MHz
Channels available	96 (8 groups with 12 channels each)	96 (8 groups with 12 channels each)
Frequency response	50Hz – 15.000Hz (±3dB)	50Hz – 15.000Hz (±3dB)
Audio outputs	3,5mm stereo mini-jack	3,5mm stereo mini-jack
Controls	Volume, up, down, SET	Volume, up, down, ESC, SET, TONE, LIMITER & MIX
Indicators	Multi-function LCD, LOW battery, RF	Multi-function LCD, LOW battery, RF
Power supply	2 AA 1.5V batteries	2 AA 1.5V batteries
Operating time	> 12h	> 12h
Dimensions (W x H x D)	64 x 90 x 23 mm	64 x 90 x 23 mm
Weight	95 g	95 g





The data are not binding;
ANT / INTO MUSIC reserves the right to
modify the data at any time and without
previous notice.



ANT

Advanced Native Technologies
www.ant-intomusic.com - info@ant-intomusic.com

A brand of AEB Industriale s.r.l.
Via Brodolini 8 - Loc. Crespellano
40053 Valsamoggia (BO) ITALY
Tel +39 051 96 98 70